

# DID YOU KNOW?

about our... **ALUMINIUM PACKING SHIMS**



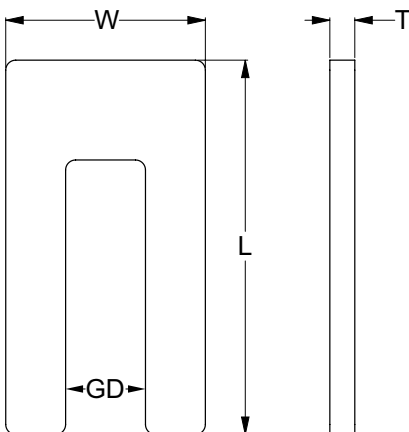
**NEW  
PRODUCT**

The easy solution for packing, levelling or spacing.

## PACKING SHIMS FIVE SIZES \ ALUMINIUM \ HEC

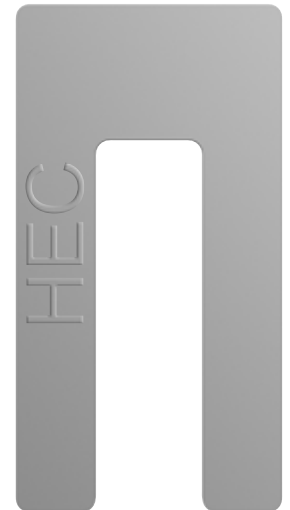


Part	QFind	Thickness	Overall Length	Overall Width	Gap Dimension	Pack Qty
		T (mm)	L (mm)	W (mm)	GD (mm)	
MPWAL075010	MPW800	1.0	75	40	16 x 55	50
MPWAL075020	MPW810	2.0	75	40	16 x 55	50
MPWAL075030	MPW812	3.0	75	40	16 x 55	50
MPWAL075050	MPW815	5.0	75	40	16 x 55	50
MPWAL075100	MPW820	10.0	75	40	16 x 55	50

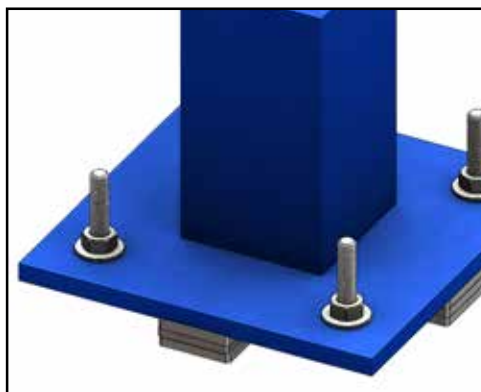


### Features:

- High corrosion resistance – marine applications
- Lightweight
- Excellent weldability
- Hardness – Brinell 75 HB, Vickers 80 HV
- Fire resistant
- 25 Tonne compression working load



» Window spacing



» Packing

### Applicable Trades

- Precast and tilt-up concrete installers
- Concreters
- Builders
- Carpenters
- Bricklayers
- Kitchen installers
- Window installers
- Stonemasons
- Gyprockers
- Cladding and weatherboard installers

### Installation:

Ideal as packers/spacers for steel connections, facades, window and door installations. Also ideal for levelling furniture, kitchen cabinets, and floor joist packing.